



When to Take Your Puppy to Potty

#1



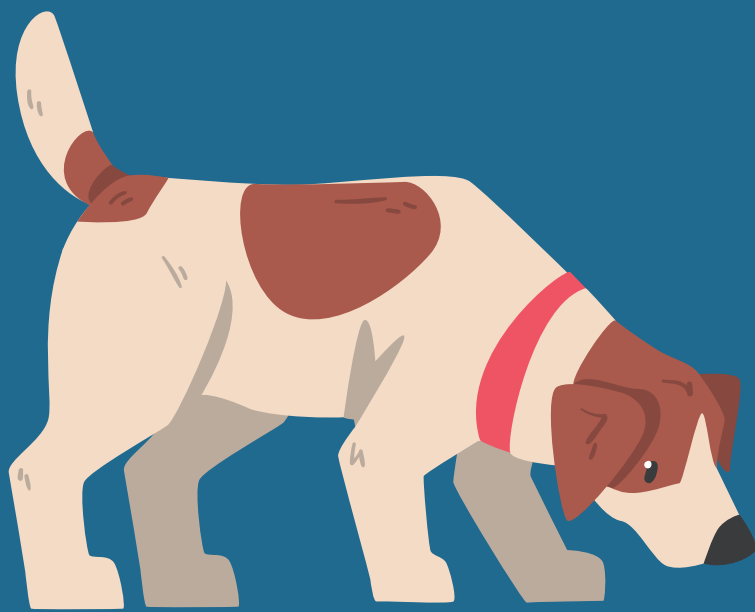
Did your puppy just wake up?

#2



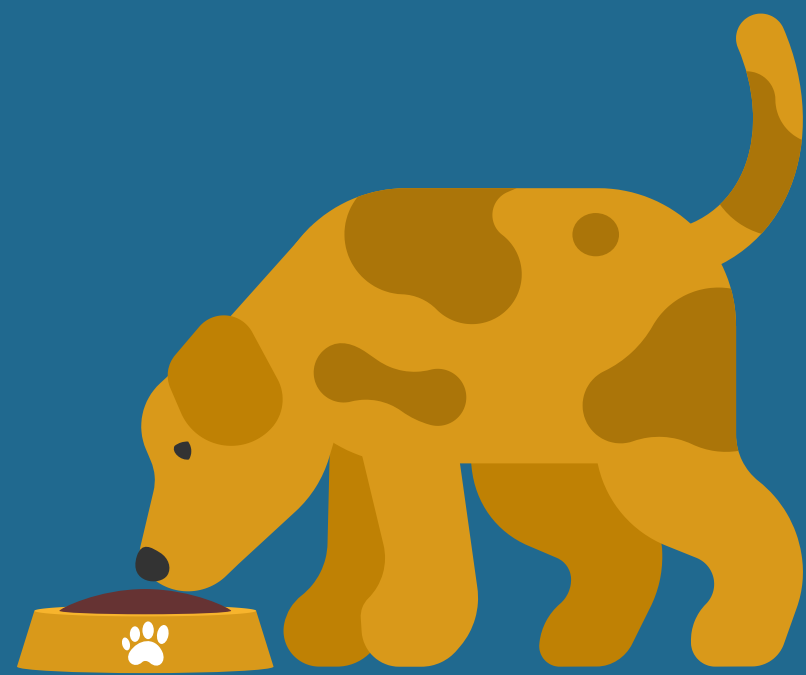
Has your puppy been playing 20-30 minutes?

#3



Has puppy stopped playing to wander and sniff or walk to the door?

#4



Did your puppy eat or drink recently?

#5



Have you had a recent training session?

#6



Is your puppy a double pooper?